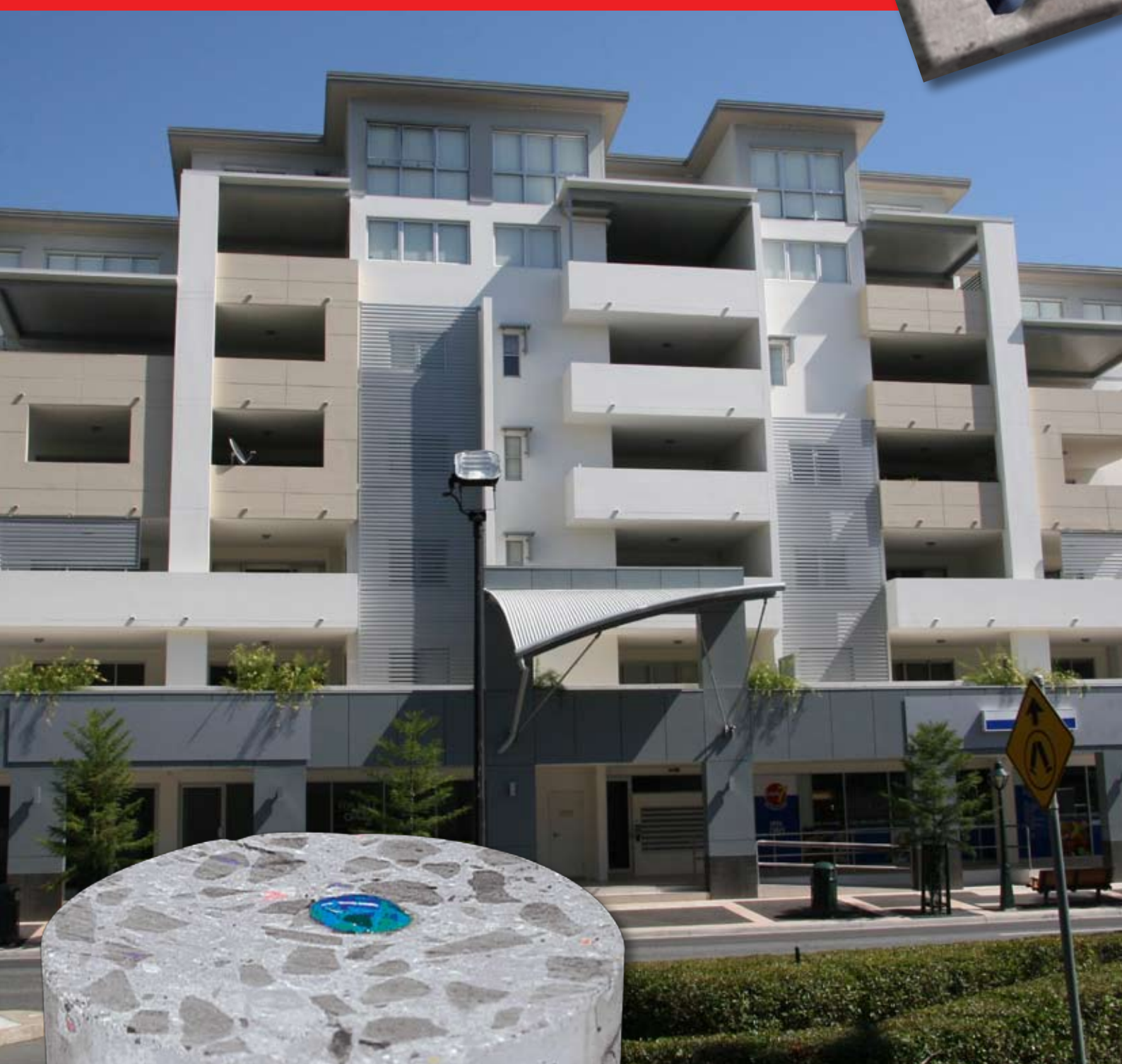


# DeepSeal

waterproof  
concrete



The way to a better future

# DeepSeal | waterproof concrete

**DeepSeal Heavy Duty** is a reactive hydrophobic pore-blocking liquid ingredient; introduced into the concrete carrying trucks at the concrete mixing plant.

## DeepSeal Waterproofing

Provides a totally effective integral waterproof and corrosion resistant system that is permanent for the life of the structure. There is no need for membranes or built-up treatments.

**DeepSeal** technology puts developers and builders at the cutting edge of concrete construction through a faster, cheaper and more reliable alternative to traditional waterproofing techniques. In most construction applications there will be no need for tradesmen to apply waterproofing membranes.

**Real dollar savings** can be achieved by eliminating an entire process and trade from the construction programme.

Simply being able to pour inert structural concrete on site opens the way for designers and builders to fully utilise the site space. It also allows for alternate methods of construction to take full advantage of site conditions. Such as single sided shutter work in basements and fully trafficable roof decks over shopping centres.

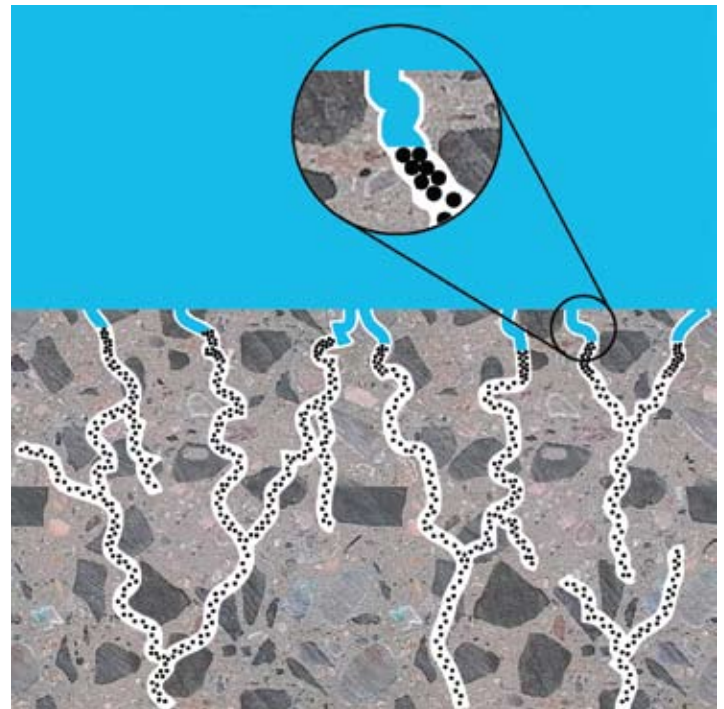
Safe waterproof basement walls can now be built in environments not possible in the past, such as adjacent to rivers and other water sources. In many cases this can lead to a greater building footprint, returning higher tenancy yields. Areas previously not considered, as income generating can now become fully habitable areas.

**DeepSeal Heavy Duty** has two distinct waterproofing actions.

**The first Action** is the reaction of DeepSeal's hydrophobic component within the concrete mix, which fundamentally changes its surface tension,

producing a concrete, inherently water-repellent and non-absorptive throughout its entire mass.

**The second action**, polymer globules moving with the bleed water during hydration collect in the concrete capillaries. When the hardened concrete is subjected to water pressure, these globules are compacted together to form a physical "plug" blocking the capillaries and preventing water entry. These globules are permanent and will not leech with time.



**DeepSeal Heavy Duty** concrete is completely impervious to water penetration, even under great pressure. Making it ideal for submerged applications, such as tunnels, underground car parks and walls adjoining water sources such as rivers and harbours.

**DeepSeal Water Proofing System** is easy to use and relatively insensitive to abuse, however we recommend concrete construction in accordance with the relevant standards for the best results. Please refer to the Technical Specification for details.

**Address:** 109 Central Park Place, Sanford FL 32771  
**Telephone:** 866-440 5372  
**Email:** rbloss@deepsealwaterproofing.us.com  
**Web:** www.deepsealwaterproofing.com